

2
BED

type your text here
Flat 7, 15 Whiteley Close, East Sussex, BN25 4AU



£1,150 Per Calendar Month

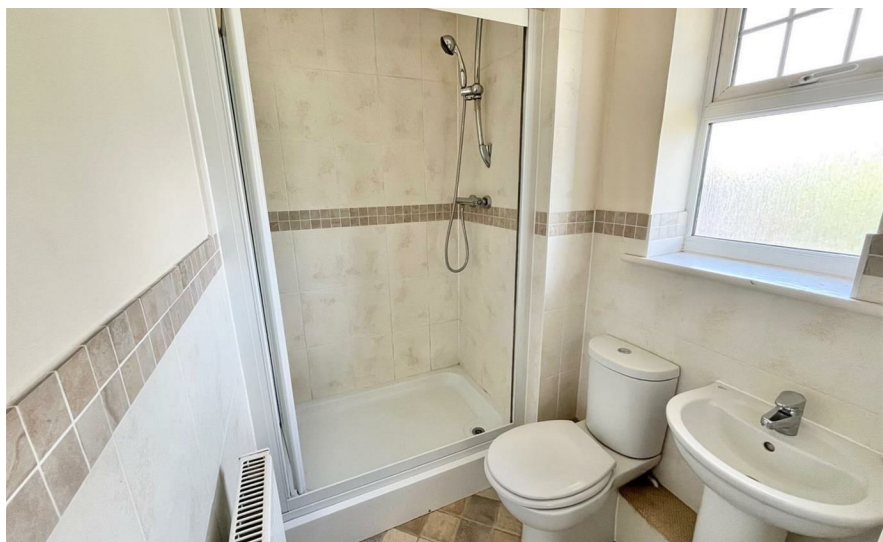
phillipmann
we do more

www.phillipmann.com



inbrief...

Well Presented 2 Bedroom Purpose Built Apartment situated in this convenient location within easy reach of local nurseries and schools and buses. Communal Entrance with door entry phone, Private Front Door with Hallway with ample storage and access to loft space, light and airy Open Plan Kitchen/Diner and Kitchen with wide angled views from the bay window towards Seaford Head and glimpsed sea views. Kitchen area has modern units and integrated oven/hob, Master Bedroom with Ensuite Shower Room, Good Size Bedroom 2 with fitted wardrobe, Modern Bathroom Suite, Allocated Parking, Bike Store and Communal Parking.



moreinfo...

Phillip Mann Lettings Office
16 Bridge Street, Newhaven, East Sussex, BN9 9PJ
01273 517 517



To see more details on this & all our homes go to
www.phillipmann.com